

GOLDEN FUTURE



**标记追溯
整体解决方案
Marking & Traceability
Total Solutions**



济南中正金码科技有限公司

JINAN KINMARK TECHNOLOGY CO.,LTD

Add: 山东省济南市高新区新泺大街1166号奥盛大厦3号楼7层
7th Floor 3 Building No.1166 Xinluo Avenue Hi-Tech zone
Jinan Shandong Province,China

Tel: 400 999 2511 P. C.: 250101

E-mail: mail@kinmark.com Web: www.kinmark.com

用科技表达我们的爱
EXPRESSING OUR LOVE THROUGH TECHNOLOGY

公司介绍 COMPANY INTRODUCTION

济南中正金码科技有限公司始建于1996年，前身是济南未来之路信息工程有限责任公司，坐落于济南东部高新技术开发区，是行业领先的标记追溯系统、流体输送加注系统、伺服压装系统、机器人自动化系统研发、制造商。

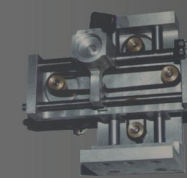
中正金码以打标机为起点，逐步深入汽车智能自动化装备领域，现公司主要有标记追溯、伺服压装、流体输送加注三大系列产品，主要业务涵盖整车、动力总成、汽车零部件、工程机械、家电、新能源、电子通讯、轨道交通等行业。是山东省“瞪羚”企业和“专精特新”企业。公司在上海、北京、广州、长春、武汉、重庆等城市设有办事机构及维修中心。与奔驰、宝马、丰田、大众、特斯拉、通用、日产、一汽红旗、广汽、长安汽车、北汽福田、广汽本田、北京现代、比亚迪、长城汽车、吉利汽车、奇瑞汽车、小鹏汽车、蔚来汽车等国内外一流汽车厂商建立了长期的合作关系，在专注汽车行业的同时，我们还为博世、博格华纳、格力、中车、美驰、爱科等世界知名企业提供相关自动化解决方案。

展望未来，中正金码将大力推进智慧工厂相关技术的跟踪与研发，凝聚一支具备深厚行业背景及丰富实战经验的专业团队，完美融合机器人技术、智能控制技术、智能图像识别处理技术以及互联网大数据技术，为客户构建高效节能、绿色环保的数字化工厂。

Jinan Kinmark Technology Co., Ltd., formerly known as Jinan Golden Future Information Engineering Co., Ltd., was established in 1996. Located in the eastern high-tech development zone of Jinan, Kinmark is a leading manufacturer in the industry for the development and manufacturing of marking traceability systems, fluid filling systems, servo press fitting systems, and robot automation systems.

Started with marking machines, Kinmark has gradually expanded into the field of intelligent automotive automation equipment. The company's main product lines now include marking traceability system, fluid filling system, and servo press fitting system, with the main businesses covering complete vehicles, powertrain, automotive components, engineering machinery, household appliances, new energy, electronic communications, rail transportation, and other automotive related industries. Kinmark is recognized as a "Gazalla Company" and a "Specialized, Refined, Unique, and New" Enterprise in Shandong Province. The company has offices and maintenance centers in Shanghai, Beijing, Guangzhou, Changchun, Wuhan, Chongqing, etc. It has established long-term partnerships with leading domestic and international automotive manufacturers such as Mercedes-Benz, BMW, Toyota, Volkswagen, Tesla, General Motors, Nissan, FAW Hongqi, GAC, Changan Automobile, Foton, GAC Honda, Beijing Hyundai, BYD, Great Wall Motor, Geely, Chery, XPeng, NiO, etc. While focusing on the automotive industry, we also provide relevant

HISTORY



1996
我们成功将气动打标机引入汽车制造领域。
Kinmark successfully introduced Pneumatic marking machines into the automotive manufacturing industry.



2001
静音刻划设备在金未来诞生。
The first silent engraving equipment was born at Kinmark.



2003-2005
助力臂随行车身VIN打号系统在金未来诞生，随后激光标签机在中正金码问世。
The first booster arm accompanying body VIN marking system and laser labeling machine were successively born at Kinmark.



2006-2010
强力刻划设备在中正金码诞生，目前仍保持世界上刻划深度的记录。
The powerful engraving equipment was born at Kinmark, and it still holds the world record for engraving depth.



2011-2016
成功推出机器人自动打号系统，VIN自动识别系统，激光深度标记系统。
Kinmark successfully launched the robot automatic marking system, the VIN automatic recognition system and the laser deep marking system.



2017-2020
超刻系列、轻刻系统相继问世，其中QL6030标记头重量仅3.8kg。
The Super Engraving Series(S*Series) and the Light Engraving System were successfully released in succession, of which the weight of the QL6030 marking head is only 3.8 kg.



automation solutions for Bosch, BorgWarner, Gree, CRRC, Meritor, AGCO and other world-renowned enterprises. Looking towards the future, Kinmark is committed to advancing the research and development of smart factory technologies. It aims to assemble a highly professional team with extensive industry expertise and abundant practical experience. By seamlessly integrating cutting-edge technologies such as robotics, intelligent control systems, intelligent image recognition and processing, and big data technology, the company strives to construct highly efficient, energy-conserving, and environmentally sustainable digital factories for its esteemed clientele.

标记追溯

Marking & Traceability

伺服压装

流体加注

智能装配



汽车智能制造

Automotive Intelligent Manufacturing



工程机械制造

Mechanical Engineering and Manufacturing



航空航天制造

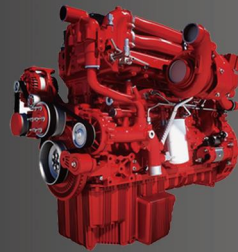
Aerospace Engineering and Manufacturing

成功应用领域 APPLICATIONS



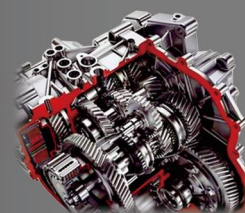
整车车身

Complete vehicle



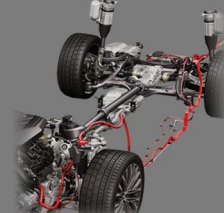
动力总成

Power assembly



变速箱

vehicle transmission



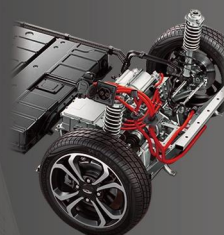
底盘系统

chassis system



新能源动力电池

New energy battery



电力驱动系统

Electric drive system



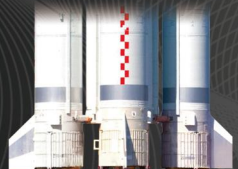
工程机械

construction machinery



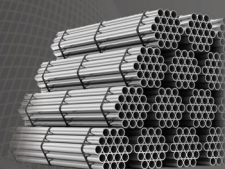
农业机械

Agricultural machinery



航空航天

Aerospace



金属加工

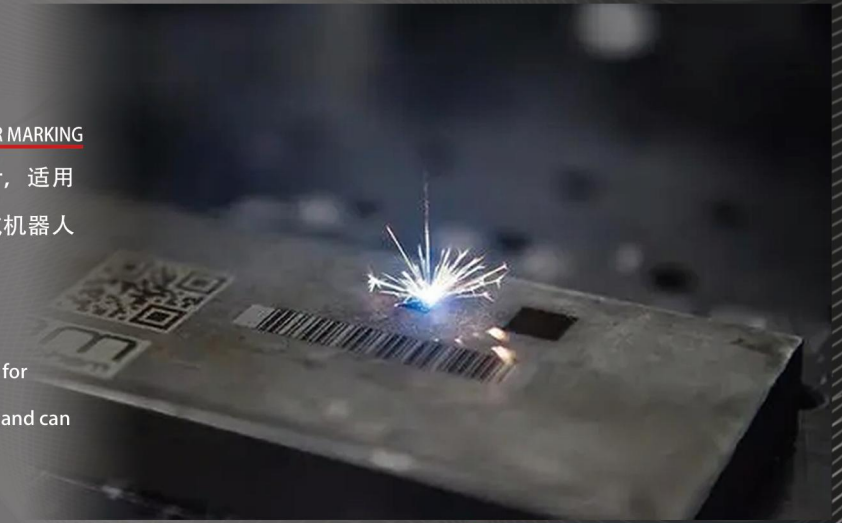
Metal processing

激光标记 LASER MARKING

激光标记

LASER MARKING

- 专为提高零部件的标识可读性以及标识生产效率而设计，适用于各种材质及复杂表面的高质量打标，易于在生产线或机器人上集成。
- It is specifically designed to enhance the readability of marks on components and the production efficiency of marks. It is suitable for high-quality marking on various materials and complex surfaces, and can be easily integrated into production lines or robots.



针式标记 DOT PEEN MARKING

气动刻划标记

PNEUMATIC ENGRAVING

- 主要适用于各类需要静音标记的场合，使用压缩空气作为刻印动力，字符笔画连续，工作噪音低于60分贝。
- It is mainly suitable for various kinds of occasions needing silent marking. It utilizes compressed air as the engraving power source, ensuring continuous strokes of characters while keeping the working noise below 60 dB.



气动点阵标记

PNEUMATIC DOT PEEN

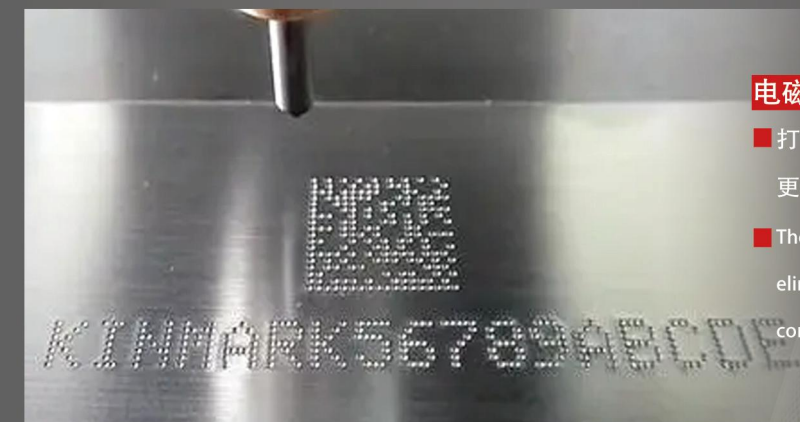
- 打印针在压缩空气作用下做高频冲击运动，在工件上标记出有一定深度连续凹点。
- The printing needle undergoes high-frequency impact movement under the action of compressed air, resulting in continuous and deep concave marks on the workpiece.



电磁点阵标记

ELECTROMAGNETIC DOT PEEN

- 打印针采用电磁驱动进行点阵标记，摆脱对压缩空气的依赖，更利于便携作业。
- The printing needle utilizes electromagnetic drive for dot matrix marking, eliminating the dependence on compressed air. This design makes it more convenient for portable operations.



01 针式打标机 DOT PEEN MACHINE P06

打标案例	MARKING CASES
选型种类	EQUIPMENT SELECTION
连接方式	CONNECTION TYPE

02 针式标记标准设备 STANDARD EQUIPMENT FOR DOT PEEN MARKING P11

机器人刻划设备	ROBOTIC MARKING EQUIPMENT
助力臂刻划设备	ROBOTIC ARM MARKING EQUIPMENT
平衡器吊挂标记设备	BALANCER HANGING MARKING EQUIPMENT
压号机	PRESSING MACHINE
圆盘类标记设备	DISK MARKING EQUIPMENT
台式刻划设备	DESKTOP MARKING EQUIPMENT

03 激光打标机 LASER MARKING MACHINE P15

激光深度打标	LASER DEPTH MARKING
激光集成式打标	LASER INTEGRATED MARKING

04 激光标准设备 STANDARD EQUIPMENT P18

柔性标签光纤激光打标机	FIBER LASER MARKING MACHINE FOR FLEXIBLE LABELS
机器人激光标记设备	ROBOTIC LASER MARKING EQUIPMENT
台式光纤激光打标机	DESKTOP FIBER LASER MARKING MACHINE

金未来针式打标技术，可多级调节点阵密度从而优化打标速度和打标美观度，对台阶面或者斜面打标已有完美的解决方案，单点重复打标可满足深度多样化的需求，它是零部件直接打标首选。

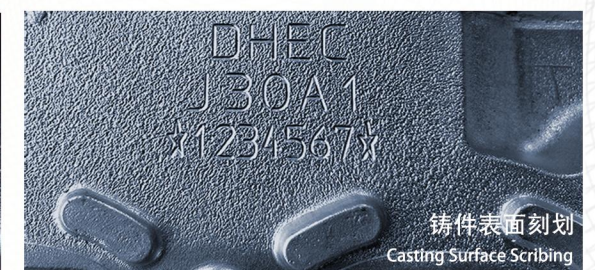
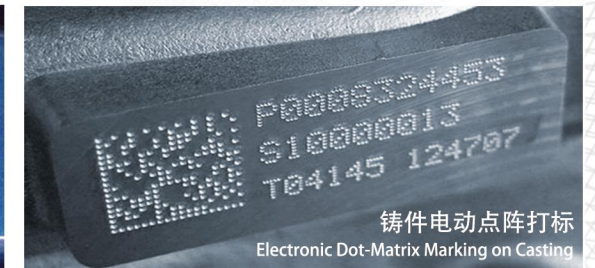
Kinmark Dot Peen Marking technology is capable of optimizing marking speed and aesthetic appeal by adjusting the density of dots in multi-stage. Meanwhile, Kinmark offers perfect solutions for marking on stepped or inclined surfaces, and its single-point repeated marking capability meets diverse depth requirements, making it the preferred choice for direct marking of parts.

针式打标机 DOT PEEN MACHINE

TECHNICAL FEATURE

- 针式打标也称为接触式标记，具有更大的操作灵活性，适用于在大部分金属（最大标记硬度≤HRC60）、硬质塑料等材质上标记。可在圆形面、斜平面和弧形表面上标记。根据使用场景不同，金未来提供完整的技术和配置，满足所有需求。
- Needle type marking, also referred to as contact type marking, has greater operational flexibility, and is suitable for marking on most materials such as metals (with the maximum marking hardness ≤HRC60) and hard plastics. Marking can be done on circular, oblique planes, and curved surfaces. Depending on different usage scenarios, Kinmark will provide a complete range of solutions and configurations to meet all requirements.

打标案例 MARKING CASES





QL6030

FEATURES

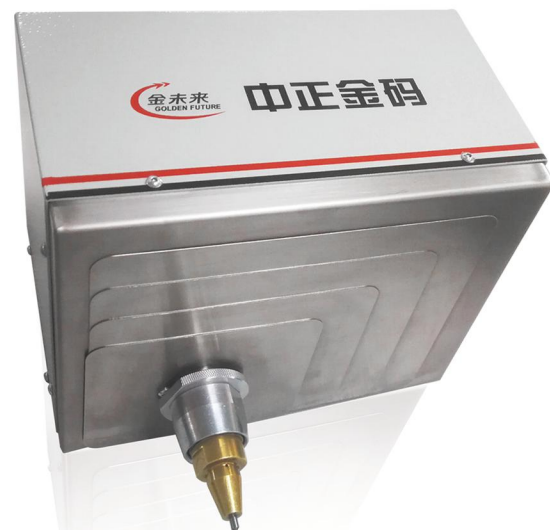
- 小巧：机身小巧，方便运用于狭小空间作业
- 高强：采用硬铝合金，结构紧凑、美观、高强度
- 防护：整体式易拆卸维护，整体密封性好
- Compact: the device is small, so as to be conveniently applied in narrow space
- High-strength: the device is made of duraluminum-alloy, featuring a compact, aesthetic design with high strength
- Protective: the device is designed with an easy-to-disassemble and maintain integral structure, providing excellent overall sealing

针式打标机 DOT PEEN MACHINES

Q11090

FEATURES

- 通用：泛用性强，标记深度范围广泛
- 持久：可连续24小时不间断作业，坚固耐用
- 平稳：优质电机驱动，运行平稳、速度快、更精确
- General: the device has strong applicability with a wide range of marking depths
- Long-lasting: the device is capable of continuous, uninterrupted operation, demonstrating its robustness and durability
- Stable: the device is driven by high-quality motors, ensuring smooth operation, fast speed, and greater precision



QHKB15555

FEATURES

- 高强：采用硬铝合金架构，美观、高强度，轻量化
- 平稳：进口双导轨，精密滚珠丝杆传动
- 安静：噪音≤60分贝，适用于对噪音要求低的场所
- High-strength: the device is made of duraluminum-alloy, which not only enhances its aesthetic appeal but also provides high strength and lightweight characteristics
- Stable: the device features imported dual rails and precision ball screw transmission, ensuring smooth and precise operation
- Quiet: the device operates with a noise level ≤ 60 dB, making it suitable for environments with low noise requirements



SQKLF6530

FEATURES

- 平稳：精密丝杠传动，运行平稳、精度高
- 动力：伺服电机驱动，动力强劲，闭环控制更加可靠
- 高速：可实现每秒2.5个字符（字高：5mm，字宽：3mm）的高速标记
- Stable: the device utilizes precision screw transmission, ensuring smooth operation and high accuracy
- Power: the device is driven by the servo motor, so that the power is strong; and closed-loop control makes it more reliable
- High-speed: high-speed marking with 2.5 characters per second (word height: 5mm, word width: 3mm) can be achieved

S⁺超刻打标机 CRIBE MARKING MACHINE

SQLF65115

FEATURES

- 高速：可实现每秒6个字符的高速标记
- 动力：步进电机升级为伺服电机，动力强劲，闭环控制更加可靠
- 平稳：精密丝杠传动代替同步带传动，运行平稳、精度高
- High-speed: high speed marking with 6 characters per second can be achieved
- Power: the stepper motor is upgraded to the servo motor, so that the power is strong; and closed-loop control makes it more reliable
- Stable: precision screw transmission replaces synchronous belt transmission, so as to be stable in operation and high in precision



SQHKB15555

FEATURES

- 高速：完成标准VIN码仅需15s
- 高强：采用硬铝合金，结构紧凑、美观、高强度
- 质量：标配金刚石刻划针，针尖锋利，刻划无毛刺，效果美观
- High-speed: a standard VIN code can be completed in only 15 seconds
- High-strength: the device is made of duraluminum-alloy, featuring a compact, aesthetic design with high strength
- Quality: the device comes with a standard diamond engraving needle that features sharp tip and produces smooth and aesthetically pleasing marks without burrs





GFDZYB110030NPA

FEATURES

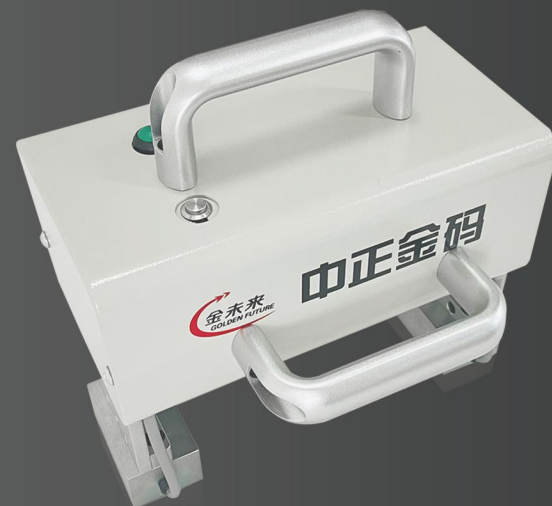
- 高度集成：采用标记机与控制器一体化结构设计，稳定可靠
- 操作简易：简洁的软件交互界面，触摸控制，无需外接键盘
- 深度可调：配备强力电磁打标针，打标深度大且力度可调节
- Highly-integrated: the device adopts an integrated design of the marking machine and the controller, ensuring stability and reliability
- Easy Operation: the device features a user-friendly software interface with a simple design; touch control is applied and no external keyboard are required
- Depth-adjustable: the device is equipped with powerful electromagnetic marking needle, ensuring a wide range of marking depth and strength

便携式打标机 PORTABLE MARKING MACHINE

Q13030P

FEATURES

- 平稳：步进电机配置高扭矩同步带驱动，运行平稳、精度高
- 高强：采用硬铝合金，一体式设计，结构紧凑，高强度
- 易用性：配有多样式定位和夹紧机构，以实现不同工况下的标记需求
- Stable: the stepper motor is equipped with high torque synchronous belt drive, so as to be stable in operation and high in precision
- High-strength: the device uses duraluminum-alloy, and features an integrated design and a compact structure with high strength
- Usability: the device is equipped with multiple positioning and clamping mechanisms, so as to achieve marking needs under different working conditions



QHKB12530

FEATURES

- 轻便：一款重量仅 6.7kg 的便携刻划标记头
- 大窗口：125×30mm 的标记范围，可覆盖大部分 VIN 的标记区域
- 适配性：可定制各种便携式定位夹具，实现快速移动装夹，灵活标记
- Light weight: this portable engraving marking head has the weight of only 6.7 kg
- Large window: the 125×30mm marking range can cover most of the VIN marking area
- Adaptability: various portable positioning fixtures can be customized, so as to achieve fast moving clamping and flexible marking



控制器

CONTROLLER

- GF920控制器基于WIN7/WIN10系统标记，体积小、重量轻、运行可靠、稳定性持久。电机运行采用专用集成电路控制，使电机能够高速平稳的运行。安装方式灵活多样，可柜装、挂装、台式。产品可方便集成到工业控制系统中，可二次开发。
- GF920 controller conducts marking based on WIN7/WIN10 system. It is small in size, light in weight, reliable in operation, and durable in stability. Motor operation is controlled by the application-specific integrated circuit, with the ability to run stably at high speed. It offers flexible and versatile installation options, including cabinet installation, wall mounting, and desktop placement. The device can be easily integrated into industrial control systems and supports secondary development.



控制箱

CONTROL BOX

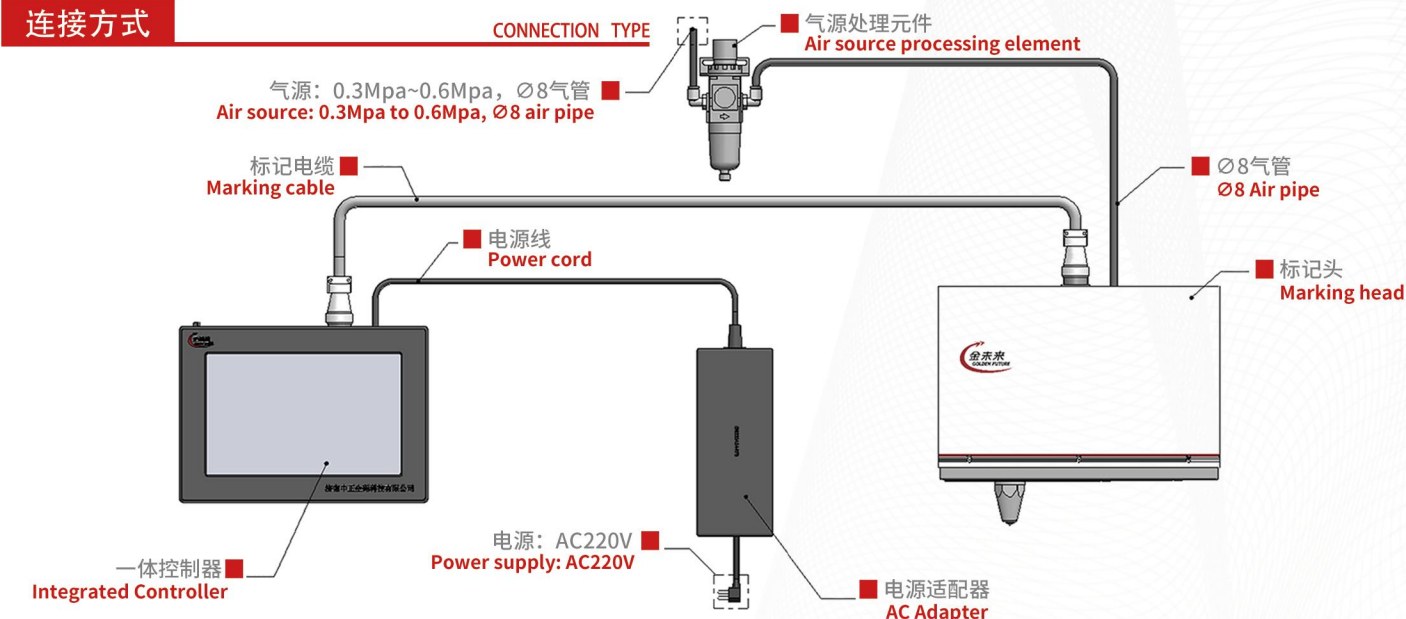
- 可靠：使用高性能重载连接器，将动力和信号线缆分离，降低干扰，提高承载能力和稳定性，方便维护。
- 强劲：采用PowerMax供电技术，极大提高了高速特性和远距离驱动能力。搭配超刻标记头，15秒完成标准VIN码打刻

- Reliable: the device utilizes high-performance & heavy-duty connectors, separating the power and signal cables to reduce interference and improving load capacity and stability. This design also facilitates maintenance.
- Powerful: the device adopts PowerMax power supply technology, greatly enhancing high-speed performance and long-distance driving capabilities. Paired with the super engraving marking head, it can complete a standard VIN code in just 15 seconds.



连接方式

CONNECTION TYPE



公司自成立以来，一直致力于自动化打标设备的开发与集成，可根据客户需求，提供满足生产需求的、适用不同场景的打标追溯系统，可配备机器视觉定位及OCR识别系统、机器人等实现无人化高效作业。

Since its establishment, the company has been dedicated to the development and integration of automated marking equipment. It can provide marking and traceability systems that meet production requirements and are suitable for different scenarios based on customer needs. These systems can be equipped with machine vision positioning and OCR recognition systems, as well as robots, enabling unmanned and efficient operations.

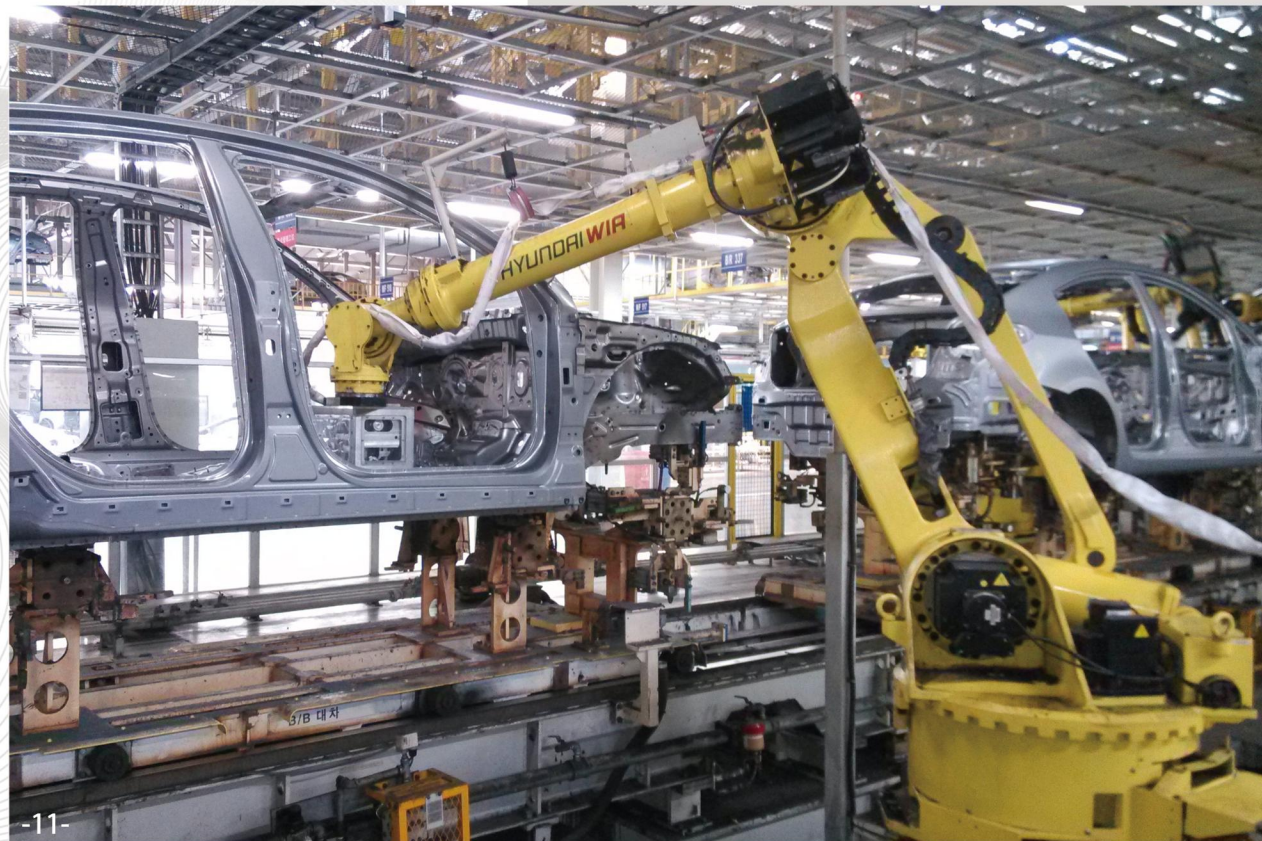
针式标记标准设备

STANDARD EQUIPMENT FOR DOT PEEN MARKING

机器人刻划设备

ROBOTIC MARKING EQUIPMENT

- 机器人刻划设备用于整车厂的汽车VIN打印，与机器人无缝对接，通过打号机控制系统与机器人控制系统进行信号的交互互锁，实现安全、自动化的VIN打印。
- The robot marking equipment is used for automotive VIN printing in car manufacturing plants. It seamlessly integrates with robots, enabling the interaction and interlocking of signals between the marking machine control system and the robot control system. This ensures safe and automated VIN printing operations.



助力臂刻划设备

ROBOTIC ARM MARKING EQUIPMENT

- 可适用于整车总装或焊装工厂的汽车混线VIN打印，该设备可适配快速工具系统，以满足不同车型、不同位置、不同打印夹具的车身VIN打印。
- The equipment is suitable for mixed-line VIN printing in automotive assembly or welding plants. It can be adapted to a quick tooling system to fulfill the vehicle body VIN printing requirements for different models, positions, and printing fixtures.



平衡器吊挂标记设备

BALANCER HANGING MARKING EQUIPMENT

- 平衡器吊挂标记设备适用于汽车零部件或整车标记，此设备主要由滑轨系统、平衡吊挂工具、标记头及夹具、控制系统等组成。
- The balancer hanging marking equipment is suitable for marking automotive components or complete vehicles. This equipment mainly consists of a sliding rail system, a balancing hanging tool, a marking head and fixture, a control system, and other components.





压号机

PRESSING MARKING EQUIPMENT

- 利用凸字模进行冲压作业，适用于钣金件类零件的流水号、VIN号、班次号等深度打刻需求，字符容量40字符，可定制。
- The convex mold is used for stamping operations, and is suitable for depth engraving requirements of sheet metal parts for serial numbers, VIN numbers, shift codes, etc. The character capacity is 40 characters, and can be customized.



圆盘类标记设备

DISK MARKING EQUIPMENT

- 是一款具有缺陷检测功能的高柔性盘类标记设备，采用集成模块化设计，配备自主研发的超刻打标机和专用打标软件，同时配有基于音频分析的标记字符质量检测系统，设备能无缝对接标记数据管理平台，实现自动定位标记、自动检测、自动换型，具有高速、省时省空间的特点，满足工业自动化大批量、高柔性的产能需求。
- It is a highly flexible disk marking equipment with the defect detection functions. It adopts an integrated modular design, equipped with a self-developed super marking machine and dedicated marking software. It is also equipped with a marking character quality detection system based on audio analysis. The equipment can be in seamless butt joint with the marking data management platform, so as to realize automatic positioning marking, automatic detection and automatic model changing. It is characterized by high speed, time and space efficiency, and meets the high-volume, high-flexibility requirements of industrial automation.



台式刻划设备

DESKTOP MARKING EQUIPMENT

- 台式刻划设备适用于汽车零部件标记，此设备主要由底架、支撑工装、本体、标记头、夹具等构成。工作时操作者将需标记的零部件放到支撑工装上，通过检测开关检测工件放置到位，双手启动设备进行标记。
- The desktop marking equipment is suitable for automobile components marking. This equipment is mainly composed of a base frame, supporting fixtures, a main body, a marking head, and fixtures. During operation, the operator places the component to be marked on the supporting fixture and activates the device using both hands after the detection switch confirms that the placement is in the proper position.



TECHNICAL FEATURE

激光打标适用于对从塑料到金属的几乎所有类型材料的永久标记（条形码、二维码、logo、字符等），对材料表面硬度和纹理并不挑剔。对于快速、高质量打标尤为适合。从零部件到最终产品，根据使用场景不同，金未来为用户提供最佳解决方案与技术支持，满足所有需求。

Laser marking is suitable for permanent marking on almost all types of materials, ranging from plastics to metals (it can mark barcodes, QR codes, logos, characters, etc.). It does not require the material to have a specific hardness or texture, so it is particularly suitable for fast and high-quality marking missions. From components to final products, Kinmark provides users with the best solutions and technical supports to meet different usage scenarios and diversified requirements.

激光打标机
LASER MARKING MACHINE

激光深度打标
LASER DEPTH MARKING

对于特殊材料，可对样件进行试打标，以匹配合适的激光打标机类型 MARKING ON VARIOUS MATERIALS

■ 铝铭牌 ALUMINUM NAMEPLATE	■ 轴承 BEARINGS	■ 金属零部件 METAL PART	■ 刀具 CUTTER	■ 陶瓷管 CERAMIC TUBE	■ 塑料按键 PLASTIC KEY

■ 车身钣金件的VIN号打标 (激光深度打标) VIN marking of body sheet metal parts (laser depth marking)	■ 纸质铭牌 PAPER NAMEPLATE	■ 涂装打标 COATING MARKING	■ 发动机缸体 ENGINE BLOCK	■ 曲轴 CRANKSHAFT



易拓印 EASY RUBBING

- 采用特殊打标工艺，确保喷漆后清晰拓印。
- The equipment utilizes a special marking process to ensure clear rubbing after painting.

易集成 EASY INTERGRATION

- 适用与机器人或助力机械手的快速集成，设计有不同
- It is designed with various types of mounting interfaces, suitable for rapid integration with robots or assisted mechanical arms.

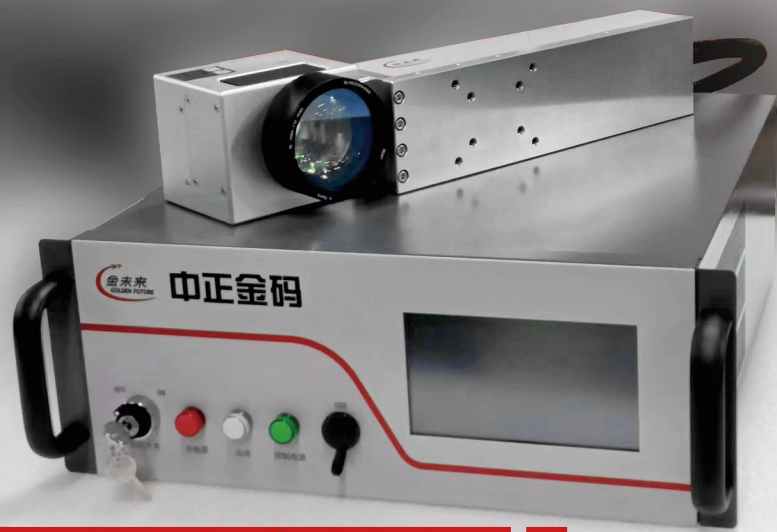
深度标记 DEEP MARKING

- 可在屈服强度超过700Mpa的高强度钢板或者强度达到1500Mpa的热成型钢板上完美实现VIN的深度标记。白车身打标深度>0.2mm。
- The deep marking of VIN can be achieved perfectly on high-strength steel plates with a yield strength exceeding 700 MPa or hot-formed steel plates with a strength of up to 1500 MPa. The marking depth for body in white is greater than 0.2mm.

自动化追溯 AUTOMATIC TRACEABILITY

- 可选配3D视觉引导系统、OCR自动识别系统，实现自动化可追溯生产。
- Optional features, including 3D vision guidance systems and OCR automatic recognition systems, enable automated and traceable production.





体积小巧 SMALL IN SIZE

- 采用内置激光器方案，提高系统集成度，方便工业现场安装
- The built-in laser solution improves the system integration, and facilitates installations in industrial environments.

工业型 RESISTANCE TO INTERFERENCE

- 工业防护等级IP54，完善的EMC设计，增强产品抗干扰能力，可长期稳定运行在复杂的工业环境
- The Ingress Protecting Rating (IP54) and the robust EMC design enhance resistance to interference, allowing for long-term stable operation in complex industrial environments.

激光集成式打标
LASER INTEGRATED MARKING



齐全的通讯接口 COMPREHENSIVE COMMUNICATION INTERFACES

- 标配Ethernet、RS232、数字IO等常规接口，可选配Profinet等工业总线，方便与PLC和其他外部设备建立通讯
- Standard interfaces include Ethernet, RS232, digital I/O, and other regular interfaces. Optional industrial buses such as Profinet allow convenient communications with PLC and other external devices.

精细的打标效果 FINE MARKING RESULTS

- 集成在产线上，5 μm的标记分辨率可在各种金属上精细打印字符、二维码、logo等
- It is integrated into the production line. It can achieve a marking resolution of 5 μm, enabling precise printing of characters, QR codes, logos, and more on various metals.



COMPANY PHILOSOPHY

金未来激光打标机是我们所有打标工作站的核心技术，核心部件已经实施标准化，模块化生产，金未来二十年的成熟打标工艺可快速响应客户的不同需求。

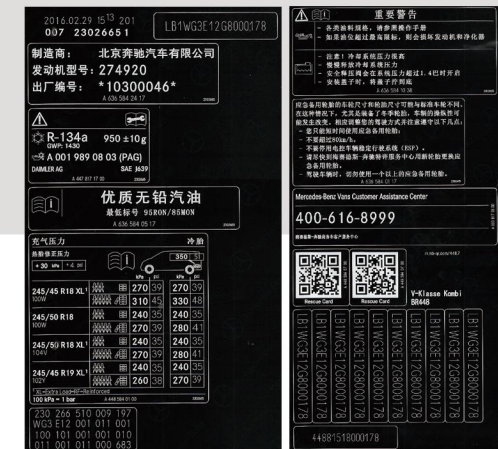
Laser Marking machine is the core technology of all our marking station solutions. The core components have been implemented with standardized and modular production. With two decades of development, our marking technology has been highly mature and is capable of rapidly responding to diverse customer demands.

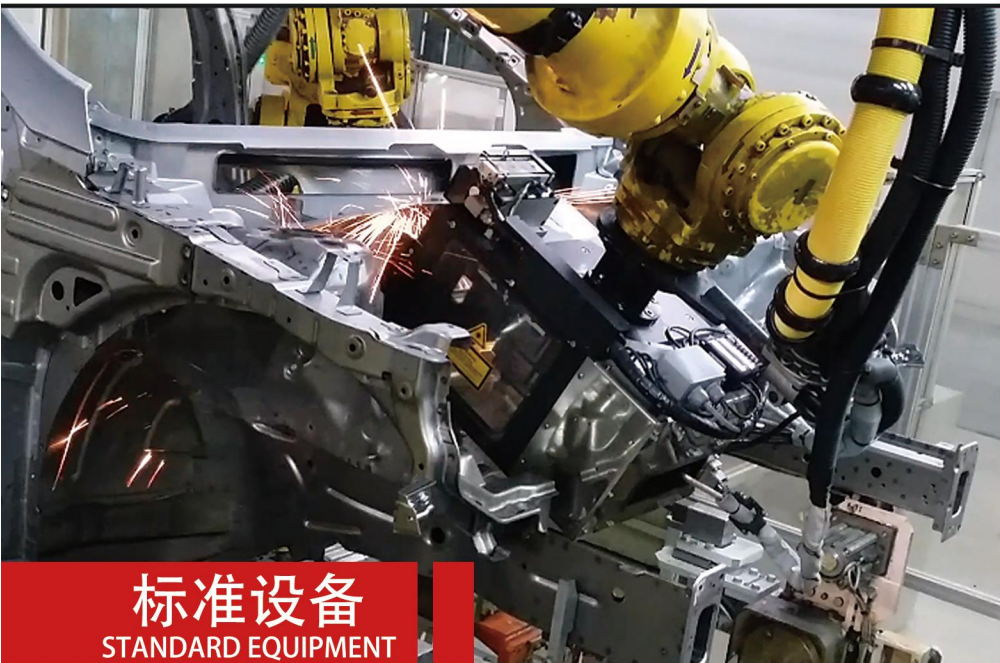
标准设备
STANDARD EQUIPMENT

柔性标签光纤激光打标机 FIBER LASER MARKING MACHINE FOR FLEXIBLE LABELS

- 该设备适用于TESA、3M及Schreiner等各种品牌的醋酸酯类激光薄膜打印，可进行展开、检测、平整、打标、切割的自动化处理，加工出客户所需要的各类标牌。可打印各种字符、文字、图形、一维二维条码等内容。

- This equipment is suitable for various brands of ethyl acetate-based laser film printing, such as TESA, 3M, and Schreiner. It can perform automated processes such as unwinding, inspection, leveling, marking, and cutting to produce various types of labels required by customers. It can print various characters, texts, graphics, 1-D and 2-D barcodes, and more.





机器人激光标记设备 ROBOTIC LASER MARKING EQUIPMENT

- 适用于整车厂的汽车VIN深度打标，可实现与机器人无缝对接，通过打号机控制系统与机器人控制系统进行信号的交互互锁，实现安全、自动化的VIN打印。可适配OCR检测、激光深度检测等系统。
- It is suitable for deep VIN marking in automotive assembly plants and can seamlessly integrate with robots. Through the coordination between the marking machine control system and the robot control system, it can achieve safe and automated VIN printing. OCR detection, laser depth detection, and other systems can also be adapted to this equipment.

标准设备 STANDARD EQUIPMENT

服务网点 OFFICES

中正金码在全国有6个办事处，1个服务中心，为您提供全方位不间断的服务支持，保证您生产无忧。
Kinmark has 6 offices and 1 service center nationwide, providing comprehensive and uninterrupted service and support to ensure worry-free production for our customers.



台式光纤激光打标机 DESKTOP FIBER LASER MARKING MACHINE

- 集成了先进的脉冲光纤激光器研制而成的第三代激光打标机系统。可在金属材料及部分非金属材料上直接打标，应用于对光洁度、精细度要求较高的领域，如轴承、齿轮、不锈钢部件，钟表零件、芯片等行业，能在金属或部分非金属材料表面标刻出精美的线条和图案。
- The equipment integrates the third-generation laser marking machine system, which utilizes advanced pulsed fiber lasers. It can directly mark exquisite lines and patterns on metal or some non-metal surfaces, and is particularly suitable for industries with high requirements for smoothness and precision, such as bearings, gears, stainless steel components, clock parts, chips, etc..



典型客户 TYPICAL CUSTOMERS

以总部为中心辐射全国：设立上海、广州、北京、长春、重庆、武汉六处办事机构。
Kinmark has its headquarter in Jinan and branches in Shanghai, Guangzhou, Beijing, Changchun, Chongqing, and Wuhan.

全球500多家客户 有汽车的地方就有金未来

With over 500 customers worldwide, "where there's a car, there's Kinmark."

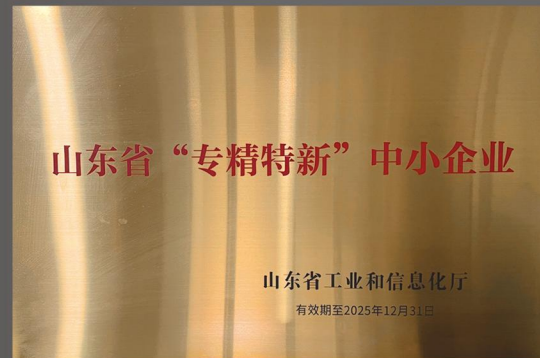




企业荣誉
ENTERPRISE HONOR



山东省瞪羚企业



山东省“专精特新”中小企业



团体标准起草单位



高新技术企业

用科技表达我们的爱
EXPRESSING OUR LOVE THROUGH TECHNOLOGY

企业资质
ENTERPRISE QUALIFICATION

